

**Ramon Design Group**

# Project Experience

Qualifications Package 2026

Presented by



**RAMON DESIGN GROUP**

SERVING THE BUILT ENVIRONMENT

# Who We Are

Thank you for taking the time to review our capabilities. At Ramon Design Group our team of **Designers, Architects, and Engineers** combine world class creativity with technical know how to **build brands, create experiences, and grow businesses.** We look forward to the possibility of working together on your upcoming initiatives.

▼  
National Registrations in all 50 States, NCARB Certified.



RAMON DESIGN GROUP  
SERVING THE BUILT ENVIRONMENT

# What Are Your Project Needs?

# Servicing Known Brands



# Servicing Known Brands



# Services

## Architecture

Whether it is a signature building that makes a statement or a roll out program for an existing design, our team of licensed Architects make sure built projects are executed on time and on budget.

- Prototype Development
- Existing Conditions Facility Assessments
- Work Letter Reviews
- Architectural Design
- Due Diligence
- Code Analysis
- Zoning Verification and Requirements
- Meet with Dry Utility Partners  
(IE. SRP, APS, SW Gas or local equal establish and communicate timeline with dry utility
- Space Planning/Bubble Plans
- Construction Documents
- LEED Design Services
- Accessibility Audits
- 3D Modeling BIM (Revit)
- Value Engineering Services
- BOMA Calculations
- Rollout Programs
- Existing Facility Code Assessments/ Studies

## Engineering

A “big picture” perspective is necessary for effective site development. With our technical expertise, practical experience, and prompt responsiveness, you are assured an efficient site design and approval process.

- Due Diligence/Site Investigation Reports
- Conceptual Site Layout/Development Planning
- Traffic Studies
- Site Design
- Stormwater Management Design
- Entitlements and Zoning Coordination/ Representation
- Permit Coordination
- Construction Administration/Bidding Support

# Our Approach

## Project Approach

Projects begin with the identification of tasks, resources, and personnel to establish project goals and objectives, from the result of a collaborative effort between the project staff and the client. As each project begins, a schedule is prepared, goals are set, tasks are defined, and timetables are prepared for each phase of both the design and construction of a project. Project teams are selected based upon the scope of the project. A Project Manager coordinates the efforts of the project team and works with the client to address individual aspects of the project, to develop a well structured design plan. Emphasis is placed not only on the “ of the design, but the future maintenance of it.

Through a variety of methods, Ramon Design Group’s staff works as a team to create innovative, efficient and dynamic plans for projects. This process is aided with the latest technology in hardware and software. In addition, project personnel maintain close contact with jurisdictional and regulatory agencies to ensure that government requirements are met.

Ramon Design Group enjoys a positive reputation as a leader in the architectural, design, engineering, surveying, and construction management. The largest contributing factor to our success is the importance we place on providing outstanding customer service.

At Ramon Design Group, our goal is to contribute to the success of your project by providing superior service with prompt turn around response time to keep pace with your project requirements as they arise.

# RDG Charitable Organizations

With every Project RDG completes, RDG donates a portion of the Project Fee back to the organization of your choice, listed here are examples of some of the groups that RDG is affiliated with and supports.



## 1 Mission

We're a community development organization giving people in poverty the opportunity to earn a house by serving their community. Since 2008, 1,107 families have earned a house by serving 338,273 hours in a variety of locally-led initiatives like community gardens, sewing classes, and literacy programs. Poverty is complex. Solutions take time. No shortcuts.

When it comes to building healthy, vibrant communities, there's nothing quite as powerful as local knowledge and local initiative. That's why our community development model is built around participation.



## ASPCA

The American Society for the Prevention of Cruelty to Animals® works to save animals from dogfighting, puppy mills, hoarding and other cruelty situations. We provide animals medical care and behavioral rehabilitation and help thousands of animals find loving homes every year. We respond to emergencies when disaster strikes and fight for stronger laws to protect animals. Your gift allows us to spend less time fundraising—and more time saving lives. Your gift will help innocent and neglected animals who feel like they've been forgotten. The ASPCA is a national leader in animal rescue and protection, working tirelessly year-round to put an end to animal cruelty.



## Folds of Honor

We the people have found what unites us. It's our honor to empower people from every walk of life through education and the opportunities it creates. Forty-five percent of Folds of Honor scholarships are awarded to minorities, making our recipient family as diverse as the country we call home. Folds of Honor has grown from a vision into a movement. This folded flag is a constant reminder of those who have paid the ultimate price for our freedom. It inspires us to help equip and educate their loved ones in need of our support. Thank you for embracing the call.

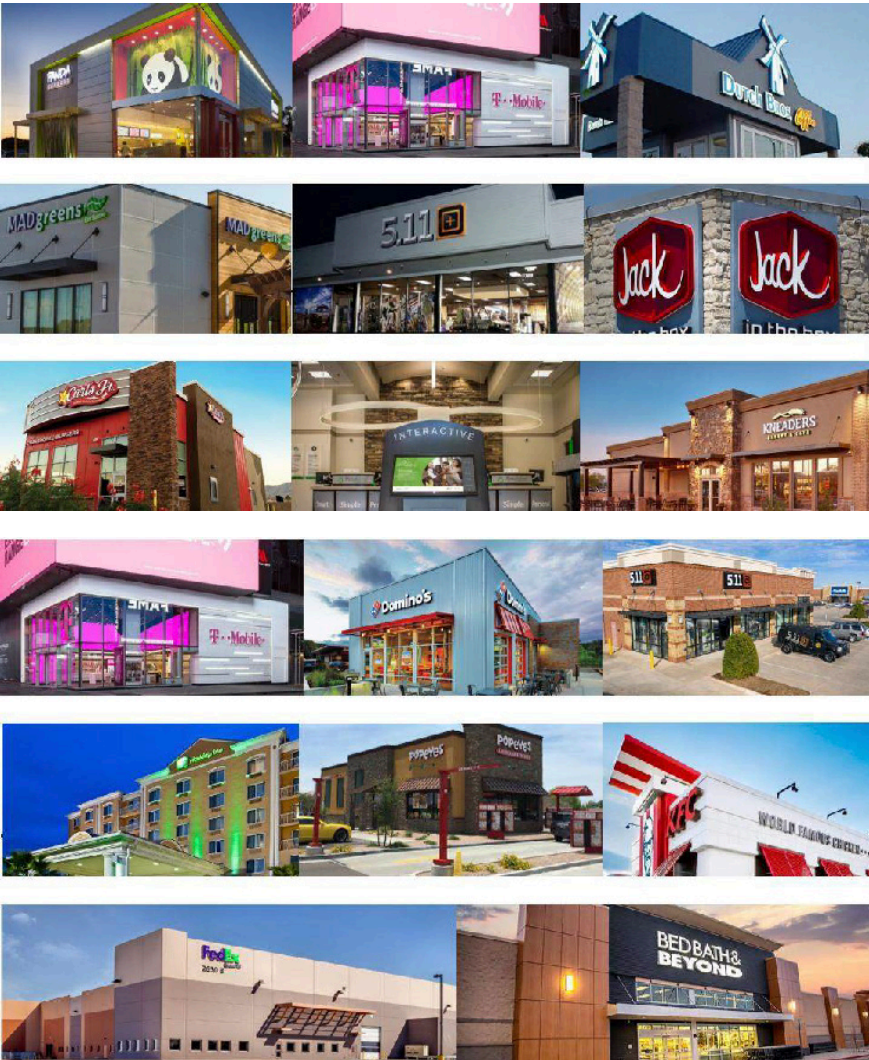


## Honor Health Foundation

A heart failure program that saves lives. Clinical trials that give cancer patients hope. A food bank that provides nutritious meals to the hungry. These are just a few examples of the ways your philanthropy can help make a lasting impact. Why give to HonorHealth Foundation? As a nonprofit, community-based hospital system, your donations help provide the exceptional care you and your family expect. If you're inspired by innovation and transformation, let us show you how you can make change real for our community and even the world, through HonorHealth Foundation.

Together we are improving health in our community, both for today and for the future.

# Key Team Members



## Alex Ramon | Partner

As a partner in the firm based in the Phoenix Office, Alex is instrumental in overseeing business/client development, new market sector initiatives, and talent acquisition. He has extensive experience in developing strategic design and architectural solutions for top brands. Alex is adept at understanding the complexities of projects and creating practical solutions to deliver projects on time and within budget.

## Justen Cassidy | Partner

Justen is a seasoned architect with over 14 years of experience, including seven years as a registered professional. His expertise spans light and heavy industrial projects, dormitories, build-to-suit healthcare facilities, retail developments, and a diverse range of tenant improvements. Known for his meticulous approach and unwavering commitment to client service, Justen ensures that every project is executed with precision and dedication.

# Experience



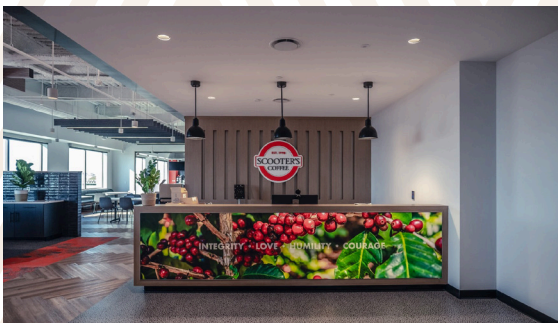
RAMON DESIGN GROUP  
SERVING THE BUILT ENVIRONMENT

## Food & QSR





- ADA Compliance
- Civil Engineering
- Permitting
- Architectural Design
- Due Diligence
- Survey
- Project Management
- Test Kitchen Design



- Survey
- Civil Engineering
- Entitlements
- Permitting
- Architecture





- Architecture Remodel Program



- Prototype Design
- Interior Design
- Graphics
- Architecture



- Due Diligence
- Documentation
- Permitting
- Construction Administration

# Retail

## DOLLAR GENERAL



BIG SAVINGS. LIKE REALLY BIG.



## DOLLAR TREE



## THE JOINT

...the chiropractic place



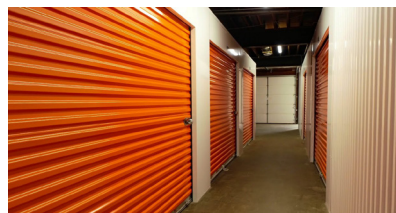
- Site Adapt
- Ground Up
- Site Feasibility Studies
- Due Diligence

## bullfrog spas



- Survey
- Entitlements
- Civil Engineering
- Permitting
- Architecture

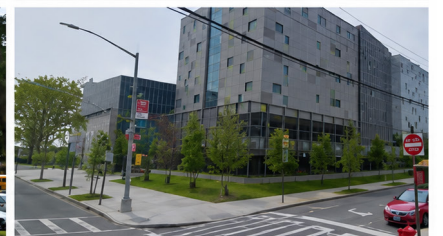
# Industrial & Self Storage



- Field Survey
- Renovation
- Marketing Material Creation
- Space Planning
- Tenant Renovation

# Education

- Field Survey
- Renovation
- Marketing Material Creation
- Space Planning
- Tenant Renovation



# Car Wash



- Prototype Design
- Architecture and Engineering
- Site Design Services
- Civil Engineering
- Entitlements
- Permitting Services

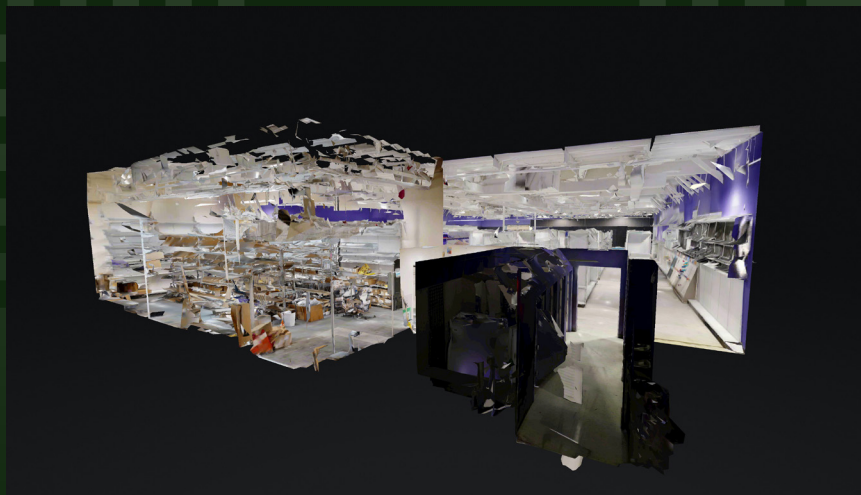
# Fueling Station



- Vehicle Circulation Analysis
- Site Design Services
- Civil Engineering
- Architecture and Engineering
- Entitlements
- Permitting Services

# Matterport

Always pushing the innovation envelope, Ramon Design Group uses the latest advancements in cutting-edge 3D laser scanning tools and 3D software platforms to deliver precise documentation of existing conditions. The 3D laser scanner captures the environment it scans by shooting a laser in all directions, providing dimensional data as a mass of dots, or a point cloud. Our laser scanning systems capture millions of data points creating a photo-realistic point cloud and digital photo images.



## Why 3D Scanning?

**True** – Performing 3D data scans up to 100 meters away per scan captures the design environment reality faster and has become a preferred method for gathering measurements for as-built documentation of unusual or complex structures

**Fast** – Ultra-fast, high-precision LiDAR sensor scans complete in a fraction of the time required by traditional methods

**Flexible** – Once the information from the 3D scans are incorporated into the point cloud, we can accurately pull dimensions, get diameters and transfer that information into CAD drawings or use them for 3D modeling

**Scalable** – These high-definition 3D scans are also commonly used as a basis for BIM development

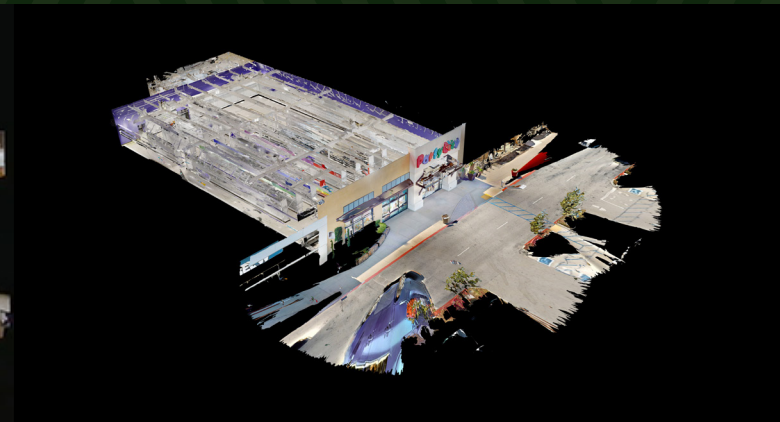
## What are practical uses of laser scan data?

**As Built Documentation** – As-built surveys using innovative 3D lidar scanning technology, enable 3D modeling for diverse tasks including building reconstruction, space design and enhanced data presentation with augmented reality

**Building Information Modeling** – Using the captured 3D data as the basis of BIM offers a quality control process that eliminates expensive and time-consuming rework by helping teams visualize the current state of the building as it compares with the CAD model

**Assets and Facility Management** – With laser scanning, engineers have a detailed 3D model of power components, machinery, pipework, and other assets which are useful for building management, retrofits, and other facility design tasks

**Equipment and Building Set-up** – Innovative 3D lidar scans offer a high degree of accuracy and the repeatability required for equipment and building set-up within the automotive, aerospace, and shipbuilding industries



# Operating Principles



RAMON DESIGN GROUP  
SERVING THE BUILT ENVIRONMENT

By embodying these operating principles, RDG stands committed to excellence in service, unwavering client support, and a collaborative spirit that fosters growth for all stakeholders in the architectural and engineering landscape.



## **We are Solutions Experts**

At RDG, we pride ourselves on being the go-to problem solvers for our clients. Our expertise in architectural and engineering solutions allows us to alleviate stress and deliver tailored strategies that meet our clients' unique needs. We understand the importance of providing effective solutions, and our clients trust us to navigate challenges on their behalf.

## **We are Client Advocates**

We are relentless in our commitment to advocate for our clients. Every request is treated with the utmost care, ensuring that the project progresses in the best interest of the client. We actively seek ways to economize and enhance project outcomes while maintaining a focus on quality and budget. Our goal is to deliver a superior result that exceeds expectations.

## **We are Committed**

Our dedication to our clients drives us to embrace challenges, even when they seem unreasonable. We encourage our RDG staff and sub-consultants to pivot and meet client requests, understanding that project timelines can be critical. We are fully committed to delivering on assignments, no matter the urgency, to maximize benefits for our clients.

## **We Listen and are Present**

We recognize the value of being fully present in all interactions, whether in meetings or conversations. At RDG, we commit to listening attentively and minimizing distractions. By fostering meaningful engagement, we aim to enhance our relationships with clients and colleagues, ensuring that every interaction is productive and beneficial.

## **We Respond**

We understand that reaching out takes effort, and we honor that initiative. RDG commits to responding to every email, text, or phone call within eight hours. We value communication and recognize that timely responses show respect for our clients' needs and inquiries, both internally and externally.

## **We Serve**

Our mission is to serve—not only our clients but also our colleagues and business associates. We actively seek opportunities to make life easier for others, believing that selfless service enriches us all. We strive to support the architecture and engineering community without expecting anything in return, fostering a collaborative and positive environment for everyone involved.



# Thank You

19



**RAMON DESIGN GROUP**  
SERVING THE BUILT ENVIRONMENT

**Alex Ramon**

---

602-405-8698  
alex@brdgp LLC.com

**Justen Cassidy**

---

724-462-9614  
justen@brdgp LLC.com